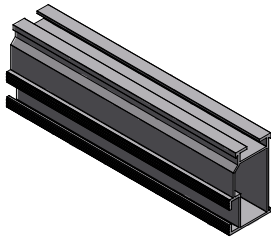
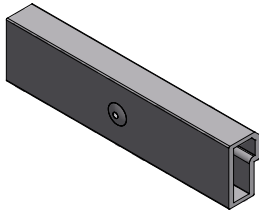


COMPONENT SPECIFICATIONS



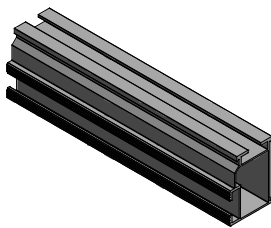
Renusol VS-C (Commercial) Rail

• Length	Varies
• Height	2.360"
• Width	1.450"
• Weight	0.666 lbs/LF
• Cross-Sectional Area	0.567 in ²
• Alloy	6063-T6
• Area Moment of Inertia (<i>I_x</i>)	0.400 in ⁴
• Area Moment of Inertia (<i>I_y</i>)	0.140 in ⁴



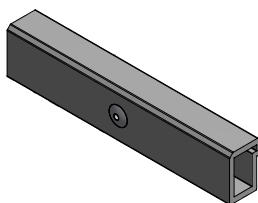
Renusol VS-C Splice Connector

• Length	7.680"
• Height	1.880"
• Width	1.070"
• Weight	0.603 lbs
• Cross-Sectional Area	0.802 in ²
• Alloy	6063-T6
• Area Moment of Inertia (<i>I_x</i>)	0.297 in ⁴
• Area Moment of Inertia (<i>I_y</i>)	0.107 in ⁴



Renusol VS-R (Residential) Rail

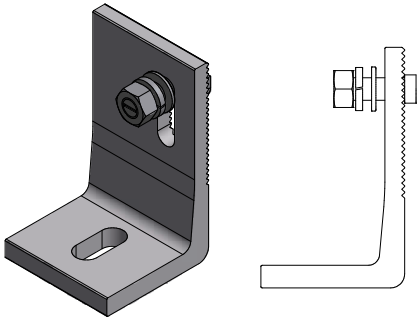
• Length	Varies
• Height	1.970"
• Width	1.480"
• Weight	0.547 lbs/LF
• Cross-Sectional Area	0.456 in ²
• Alloy	6063-T6
• Area Moment of Inertia (<i>I_x</i>)	0.234 in ⁴
• Area Moment of Inertia (<i>I_y</i>)	0.114 in ⁴



Renusol VS-R Splice Connector

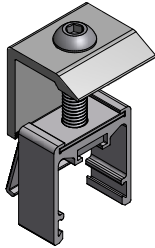
• Length	7.680"
• Height	1.530"
• Width	1.090"
• Weight	0.572 lbs
• Cross-Sectional Area	0.745 in ²
• Alloy	6063-T6
• Area Moment of Inertia (<i>I_x</i>)	0.206 in ⁴
• Area Moment of Inertia (<i>I_y</i>)	0.094 in ⁴

COMPONENT SPECIFICATIONS (cont.)



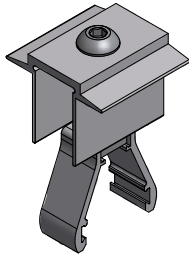
Renusol VS L-foot

- Length 2.000"
- Height 3.350"
- Width 2.000"
- Weight 0.287 lbs
- Cross-Sectional Area 1.4669 in²
- Alloy 6063-T6
- Area Moment of Inertia (*I_x*) 1.776 in⁴
- Area Moment of Inertia (*I_y*) 0.284 in⁴



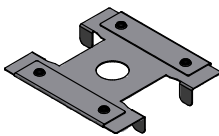
End Clamp

- Length 1.380"
- Width 1.540"
- Weight 0.101 lbs
- Alloy 6005-T5



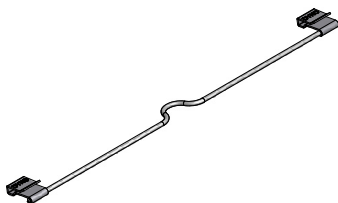
Mid Clamp

- Length 1.500"
- Width 0.750"
- Weight 0.115 lbs
- Alloy 6005-T5



WEEB-CCR 2

- Length 1.588"
- Width 1.496"
- Height 0.223"
- Weight 0.008 lbs
- Alloy 304SS



Module Jumper (DynoBond)

- Length 7.500"
- Width 0.610"
- Height 0.245"
- Weight 0.021 lbs
- Alloy SS, Coated Copper